

7.1

4 March 2018

John 2.13-22

Grand designs

Jesus is insistent that *he* is the true temple, the location of God's presence. Are you sometimes guilty of **idolising** a building?

The painting below has a bright, **Barbie-pink** background. Why do you think the artist did this?



Craigie Aitchison - Pink Crucifixion

7.2

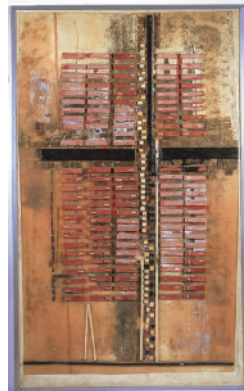
11 March 2018

John 3.14-22

The world is loved

The word John used for world is **kosmos**, which is normally used for everything that is fallen, estranged from God. Can this be loved and saved?

The collage below might represent a crossroads in the the middle of a densely packed city. You can only see the cross from above. Might people be participating in the great salvation **without realising** it?



Michael Edmonds - The cross over the city

7.3

18 March 2018

John 12.20-33

All will be drawn to him

Again Jesus emphasises that to follow him means to **let go** of our securities, comforts and preferences. What might this mean to you?

The painting below represents Jesus and Mary as a pair of stones to crush and grind wheat grains to make bread. Is this a similar idea to verse 24?



Jyoti Sahi - Dalit Madonna

7.4

25 March 2018

Mark 11.1-11

Anticlimax

Do you think that the 'triumphal entry' was a display of royal majesty, or a piece of **street theatre** that mocked the people's wish for a powerful military rebellion?

In verse 11, having entered Jerusalem, Jesus looks round and then goes back to Bethany. Why have such an anticlimactic ending to the story?



Sadao Watanabe - Christ enters Jerusalem

Reason

Write down some thoughts that you have had about God, these passages, and your life.

Tradition

What have other people said about these themes? Write down any lyrics from hymns that have been in your head, insights from books or social media, or encounters that you have had with people.

Experience

Make a note of the times when God has spoken to you this month through your 'spiritual senses', times when you've felt a sense of depth.



There is a video for each week that you can watch at www.youtube.com/c/andyfishburne



Join in an online discussion on Facebook at [@westmanxmethodists](https://www.facebook.com/westmanxmethodists)

